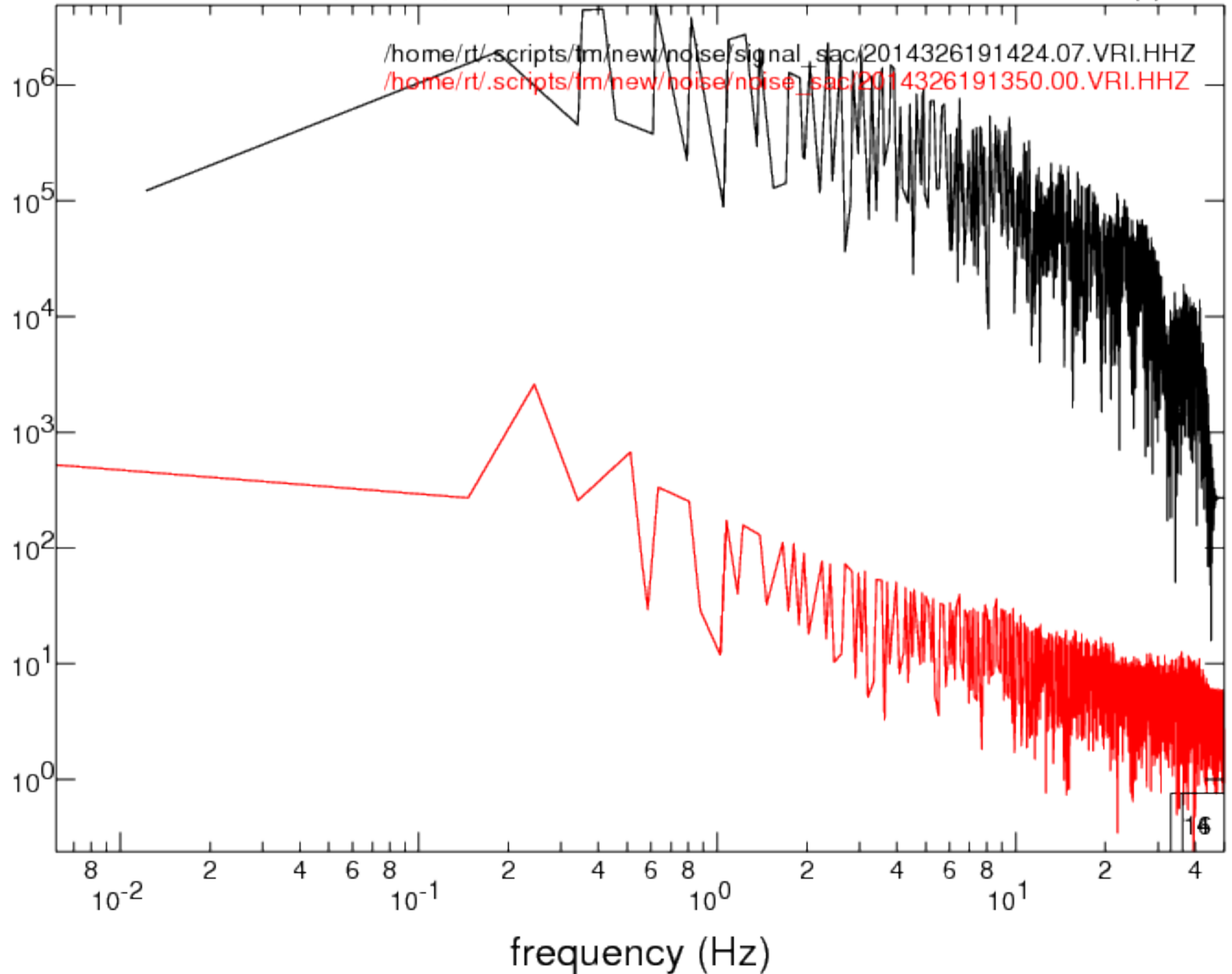
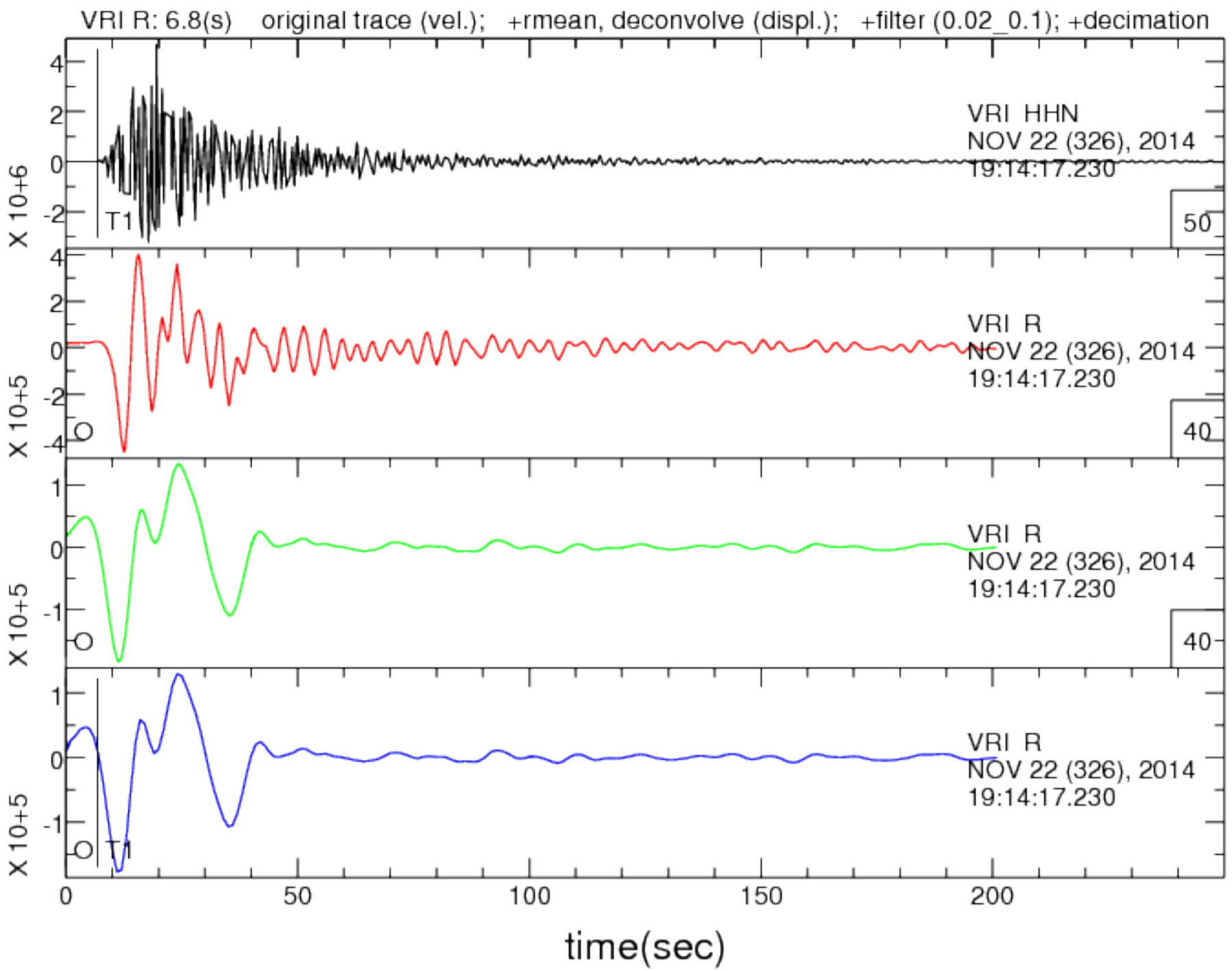


VRI 32.83(km) EvAz: 269.70 Tres: -1.4(sec) SNR: 3778.0 sensor: STS-2 ; P phase is at T1 sec

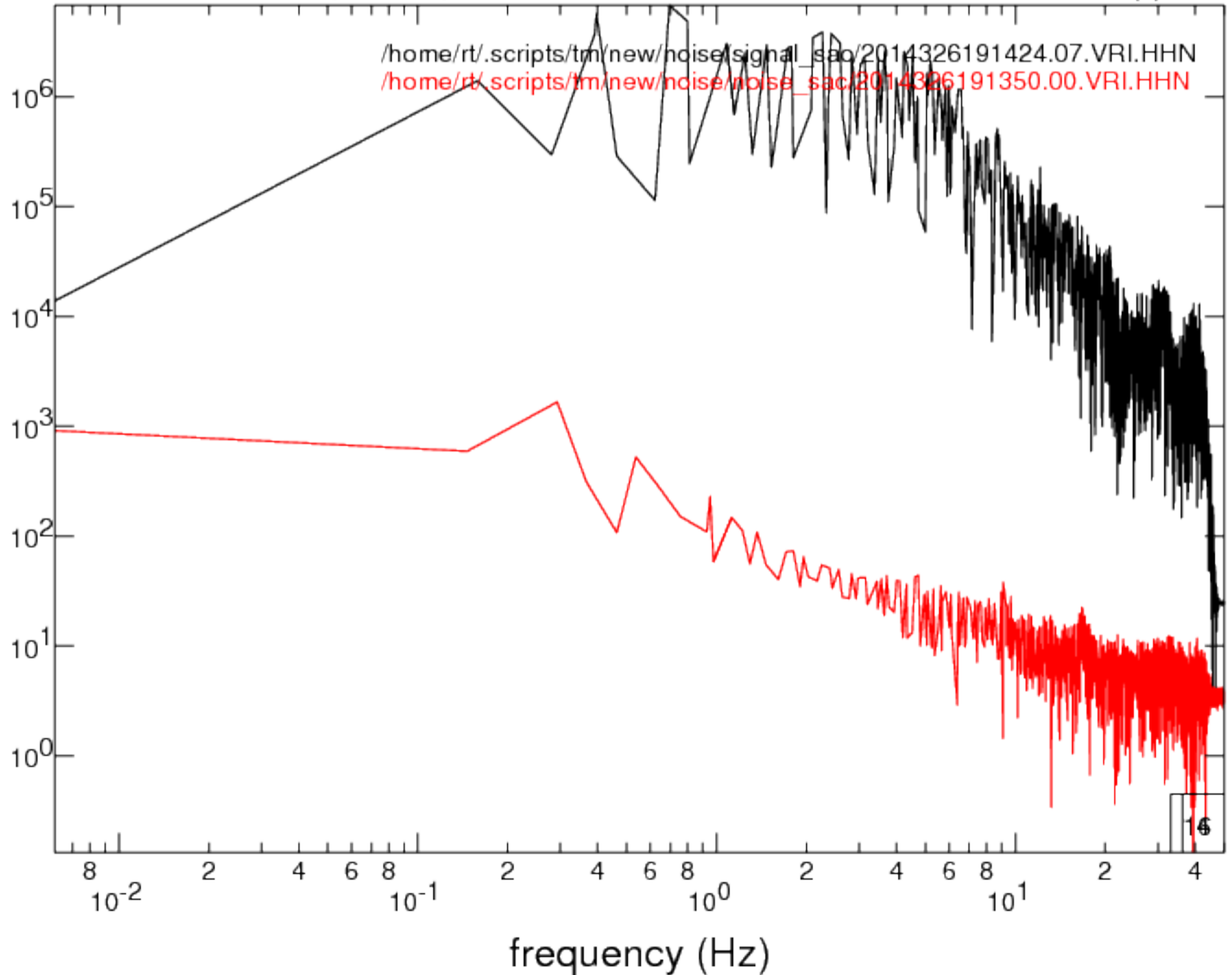
2014/11/22 19:14:17.23 ml:5.8 , 40.0 km, orid: 17010 db: 2014326 P: 19:14:24.080 tnswin: 163.84 (s) BP: 0.02\_0.1

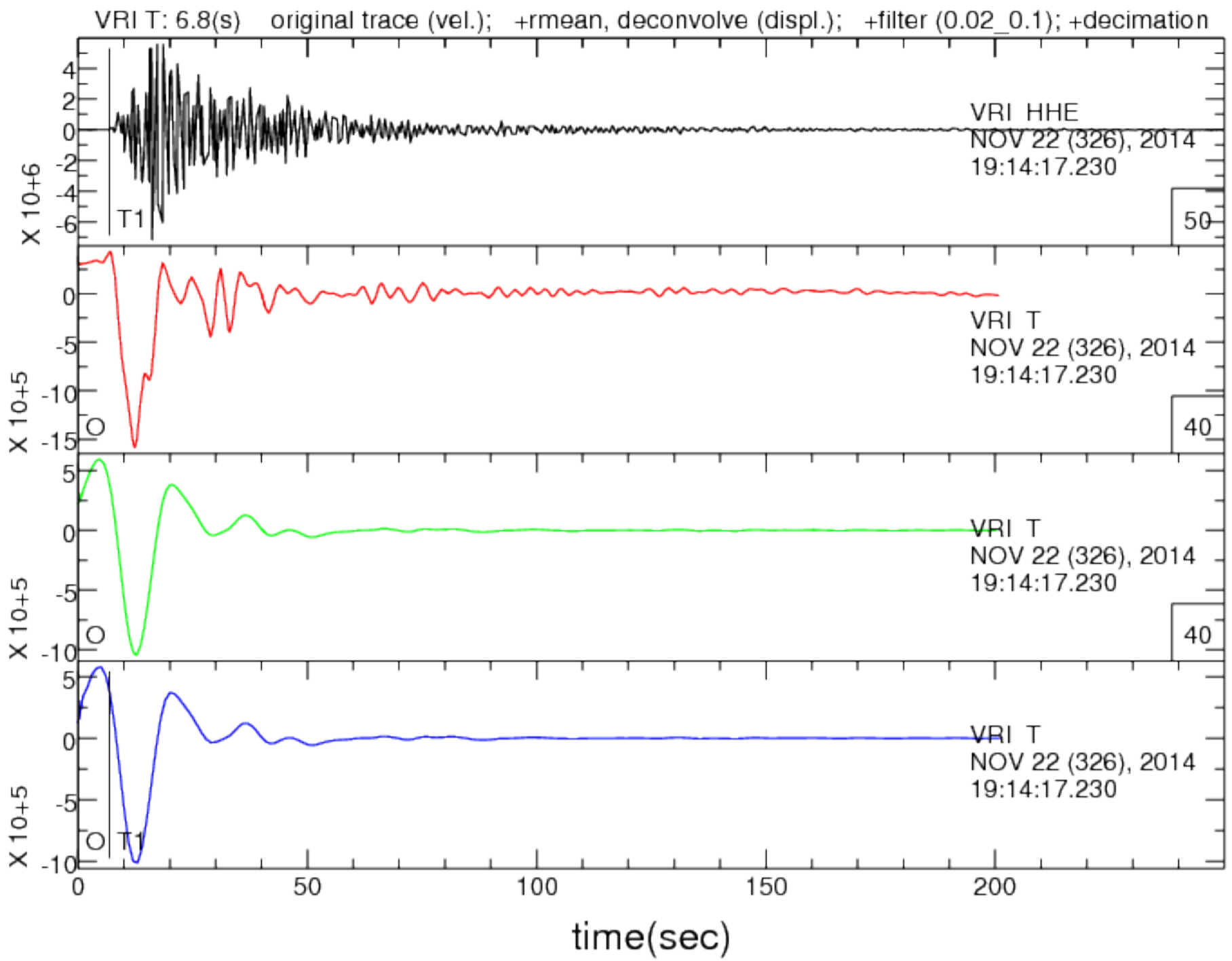




VRI 32.83(km) EvAz: 269.70 Tres: -1.4(sec) SNR: 3778.0 sensor: STS-2 ; P phase is at T1 sec

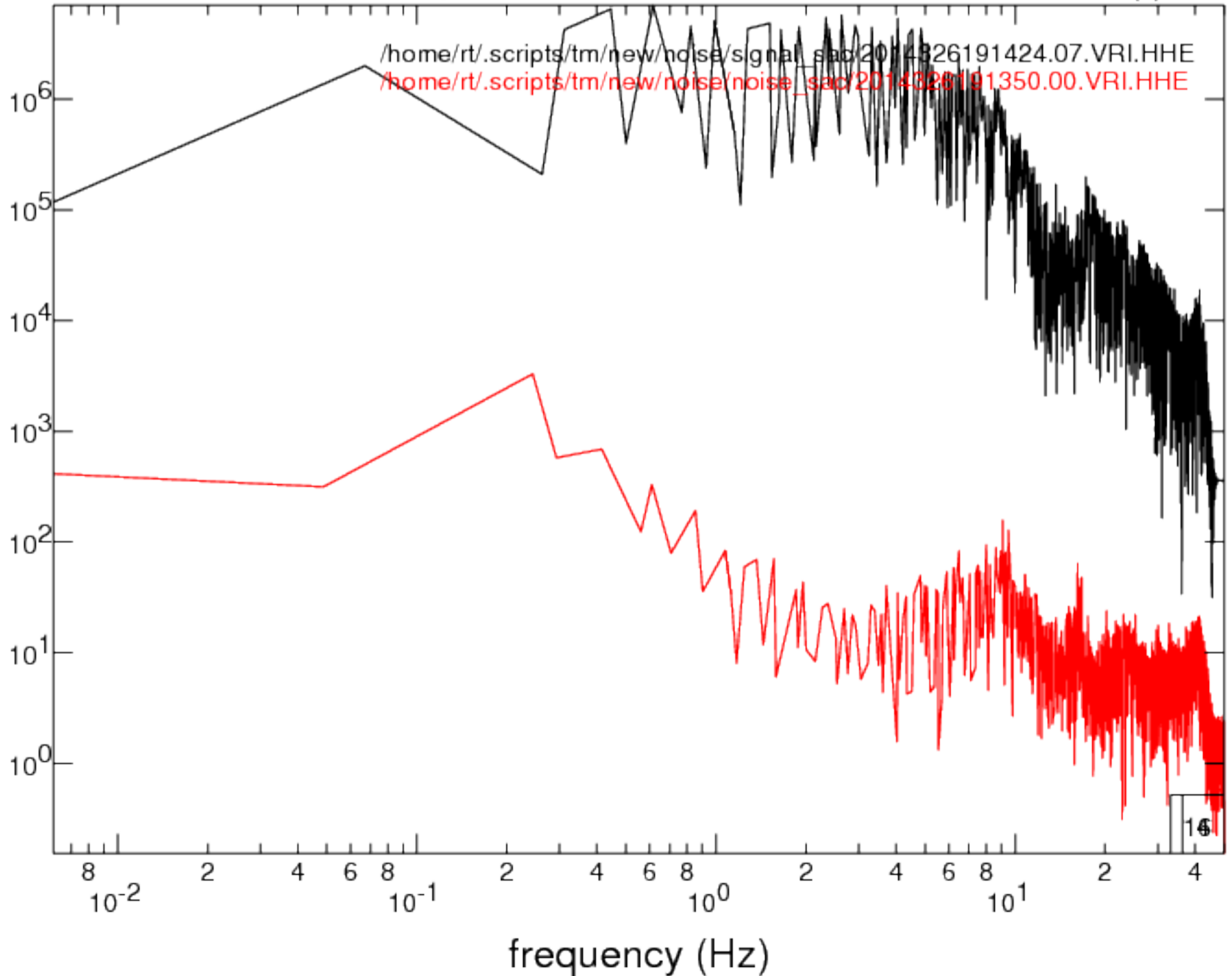
2014/11/22 19:14:17.23 ml:5.8 , 40.0 km, orid: 17010 db: 2014326 P: 19:14:24.080 tnswin: 163.84 (s) BP: 0.02\_0.1

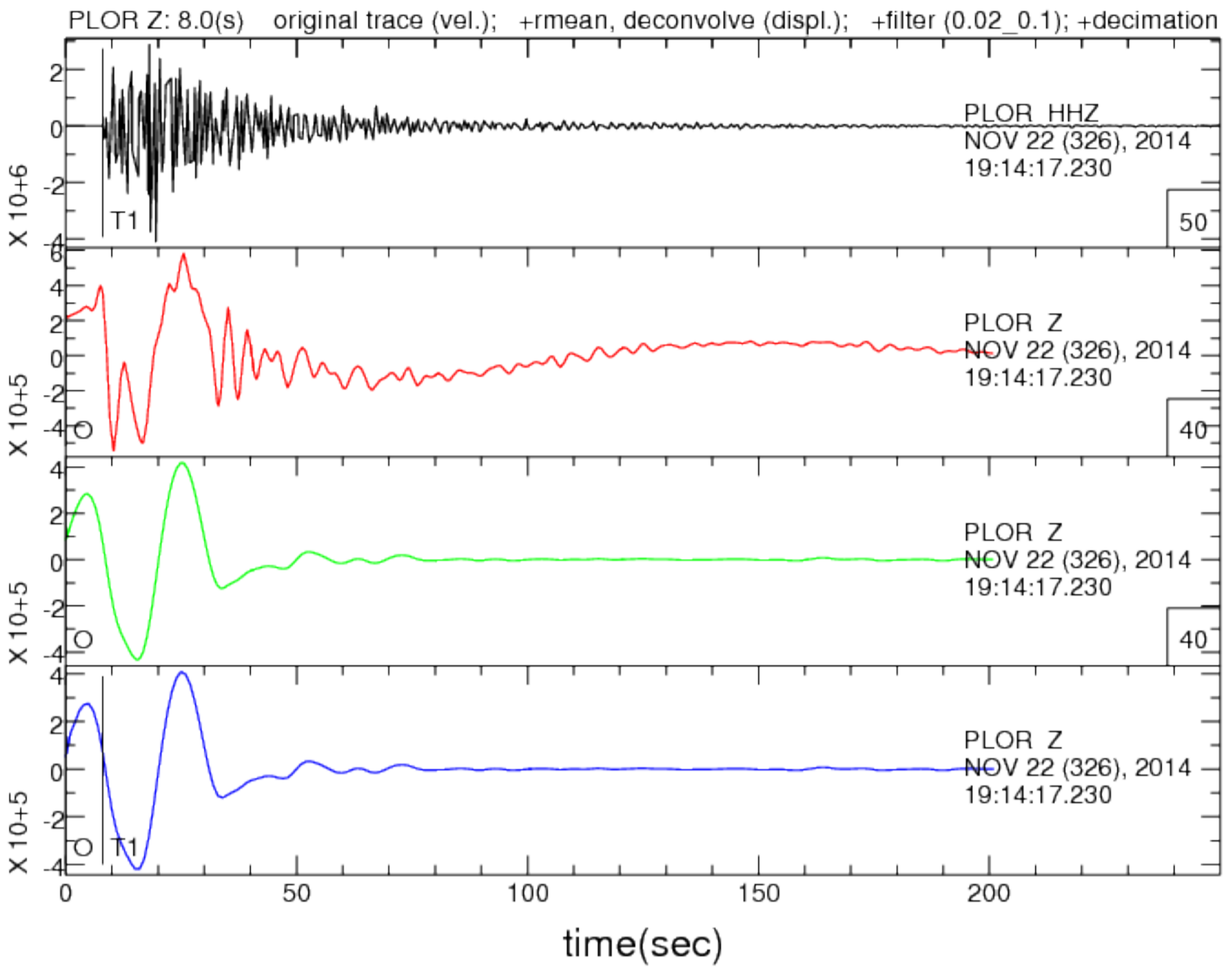




VRI 32.83(km) EvAz: 269.70 Tres: -1.4(sec) SNR: 3778.0 sensor: STS-2 ; P phase is at T1 sec

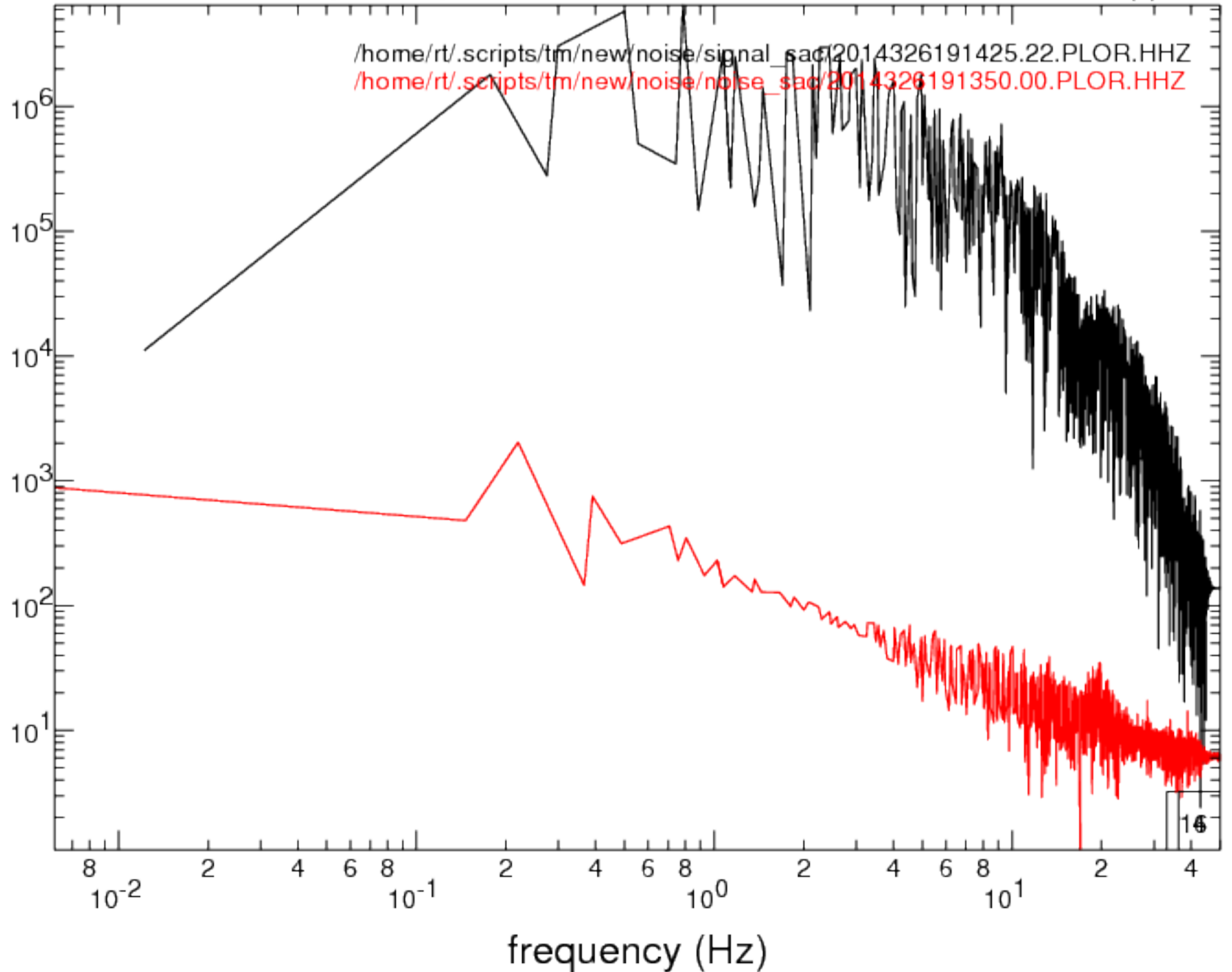
2014/11/22 19:14:17.23 ml:5.8 , 40.0 km, orid: 17010 db: 2014326 P: 19:14:24.080 tnswin: 163.84 (s) BP: 0.02\_0.1

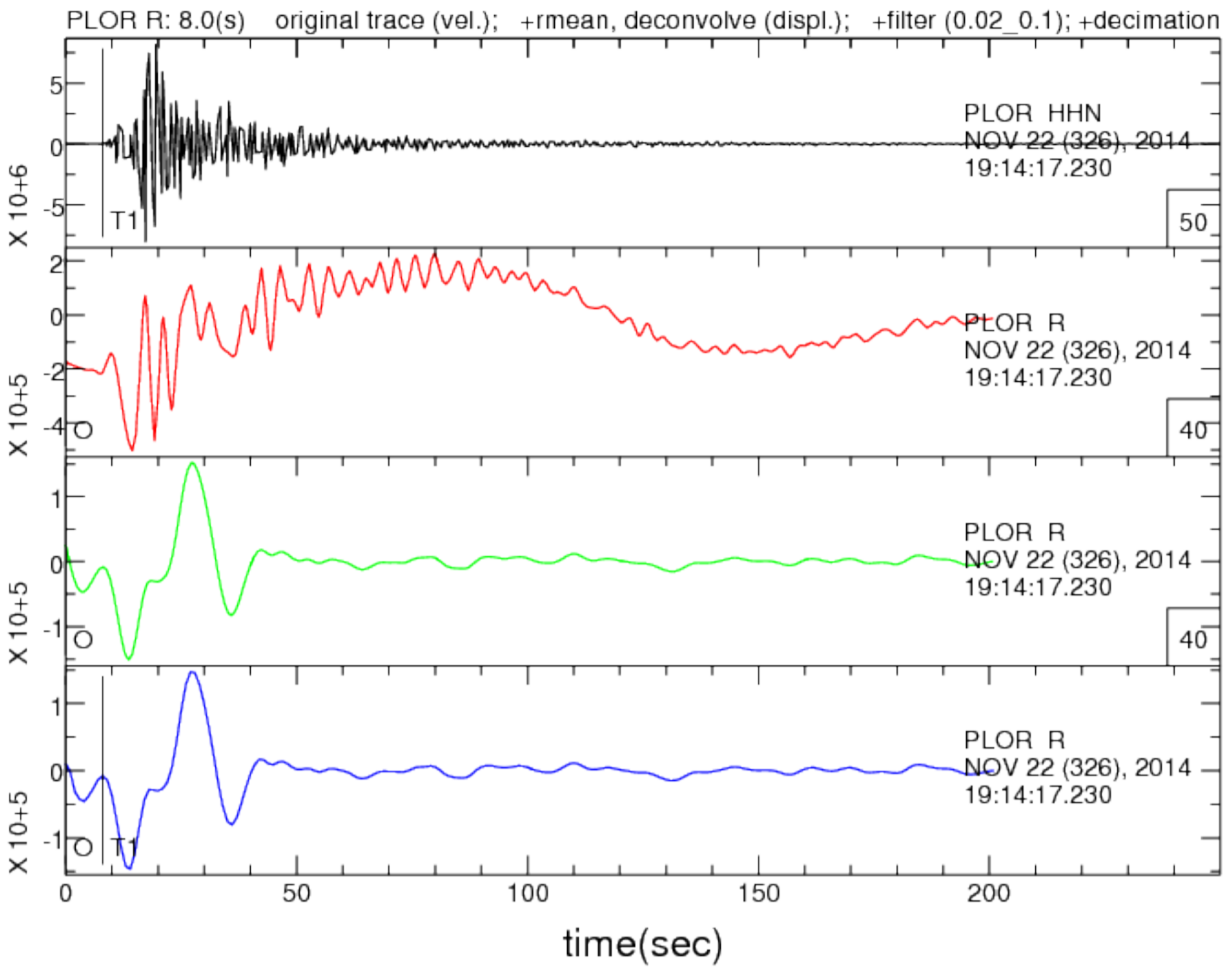




PLOR 38.91(km) EvAz: 267.40 Tres: -0.8(sec) SNR: 33164.0 sensor: STS-2 ; P phase is at T1 sec

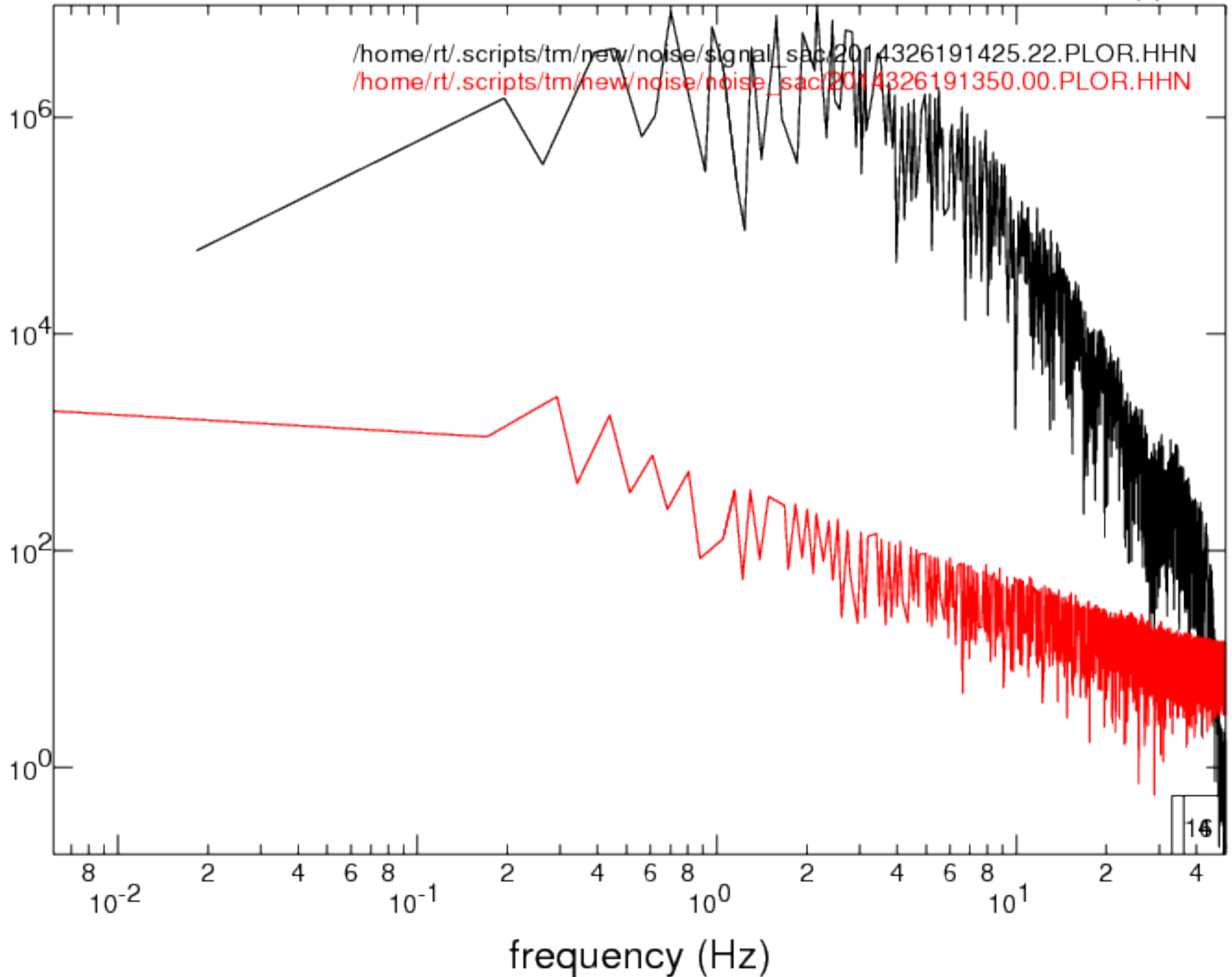
2014/11/22 19:14:17.23 ml:5.8 , 40.0 km, orid: 17010 db: 2014326 P: 19:14:25.218 tnswin: 163.84 (s) BP: 0.02\_0.1



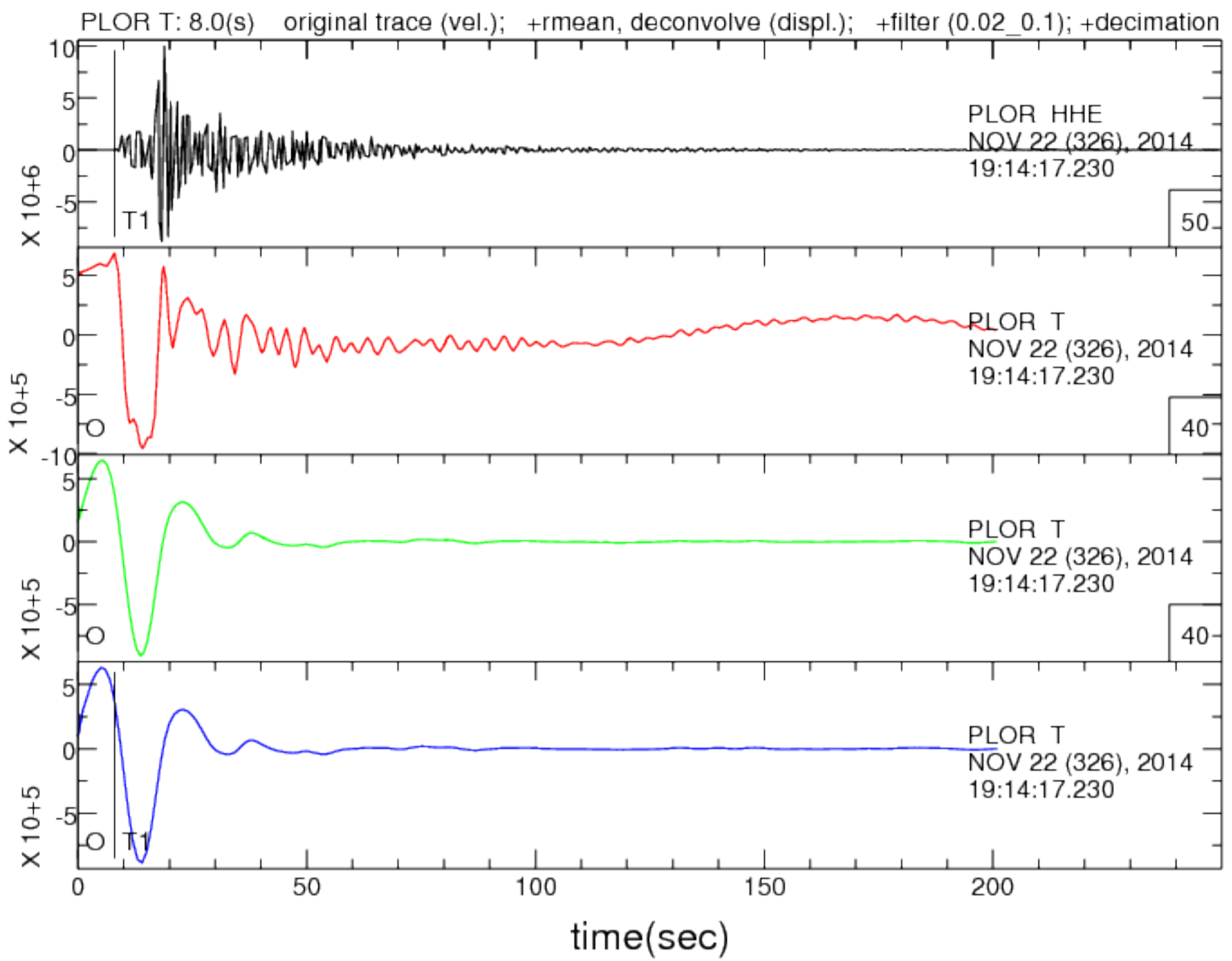


PLOR 38.91(km) EvAz: 267.40 Tres: -0.8(sec) SNR: 33164.0 sensor: STS-2 ; P phase is at T1 sec

2014/11/22 19:14:17.23 ml:5.8 , 40.0 km, orid: 17010 db: 2014326 P: 19:14:25.218 tnswin: 163.84 (s) BP: 0.02\_0.1

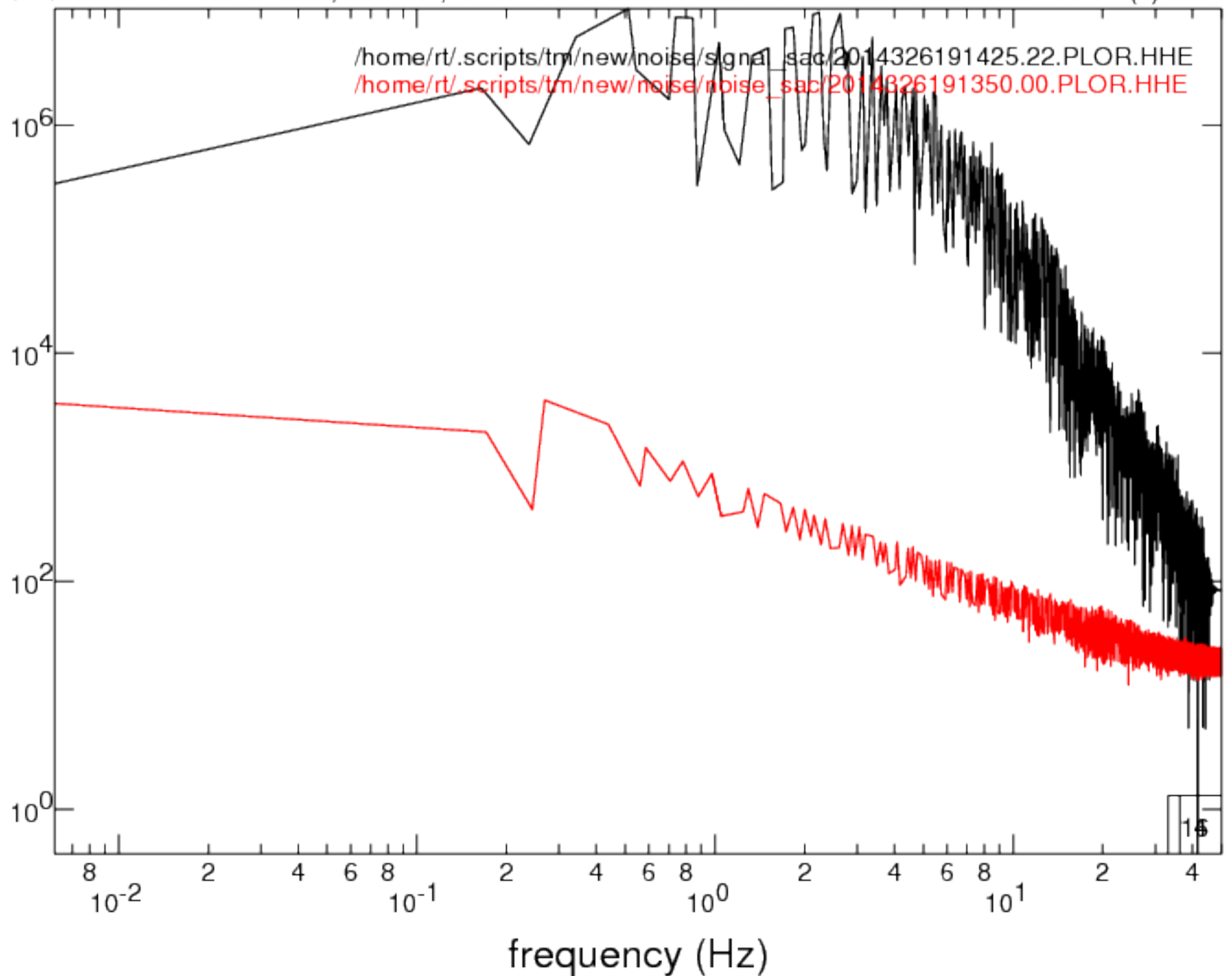


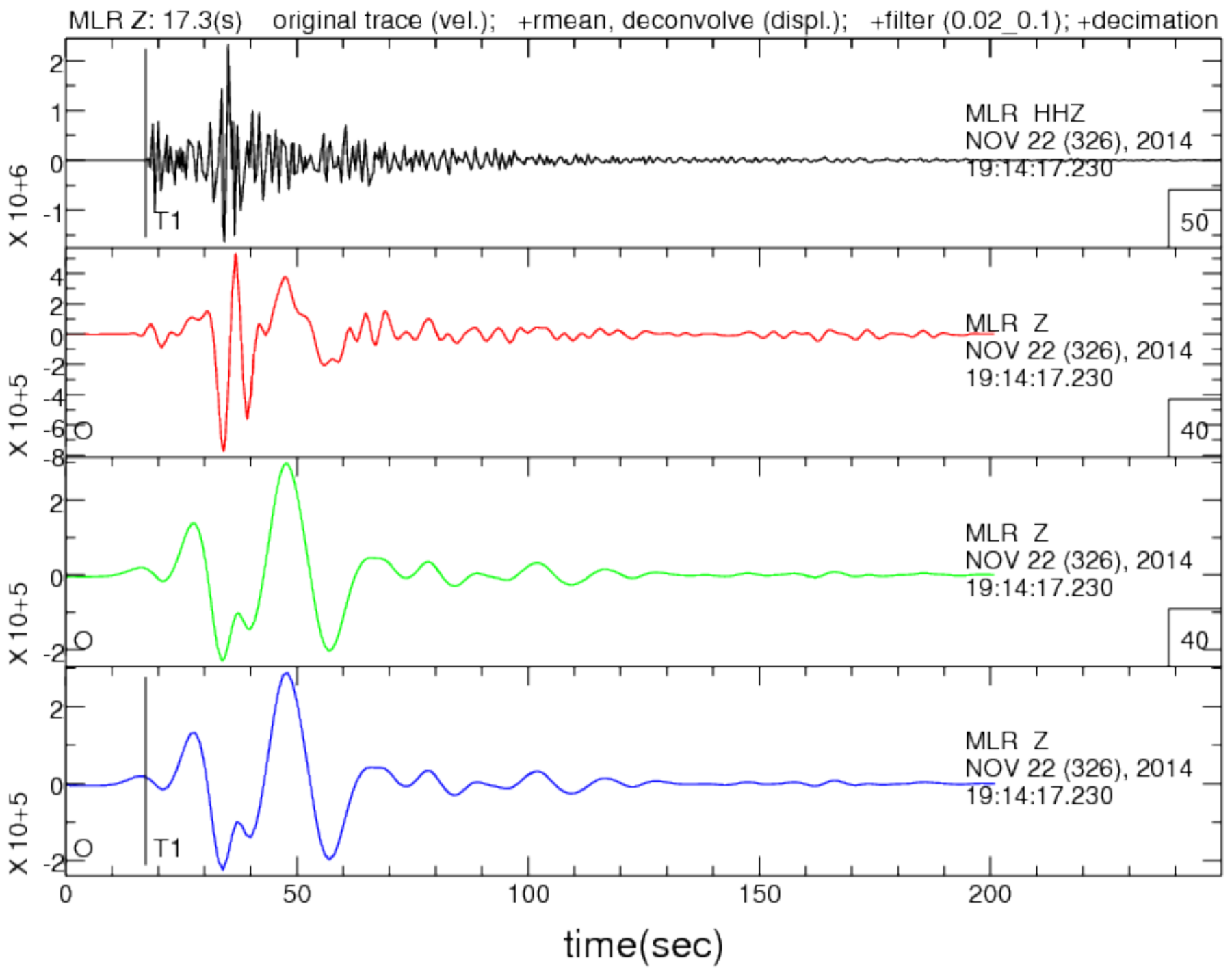




PLOR 38.91(km) EvAz: 267.40 Tres: -0.8(sec) SNR: 33164.0 sensor: STS-2 ; P phase is at T1 sec

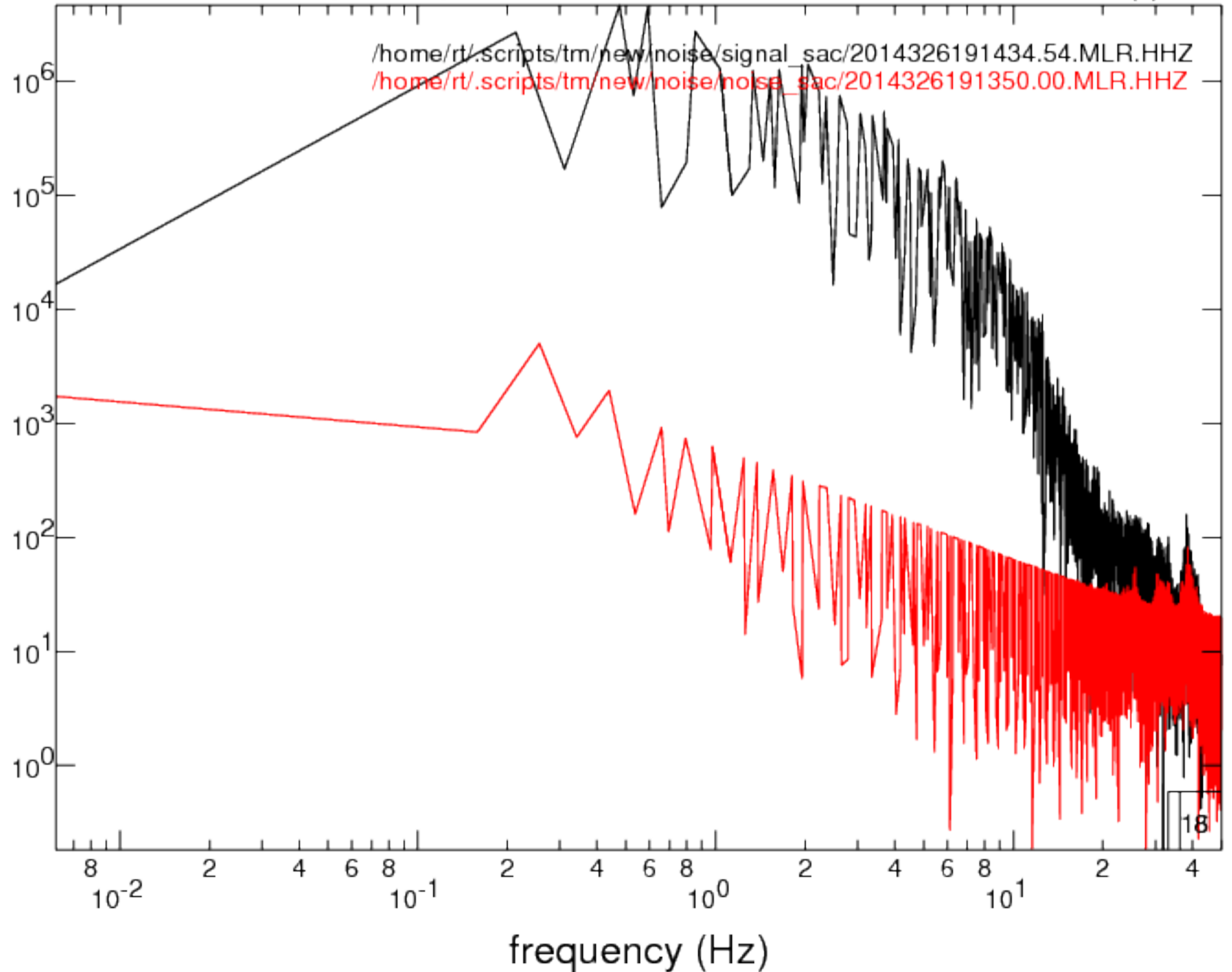
2014/11/22 19:14:17.23 ml:5.8 , 40.0 km, orid: 17010 db: 2014326 P: 19:14:25.218 tnswin: 163.84 (s) BP: 0.02\_0.1

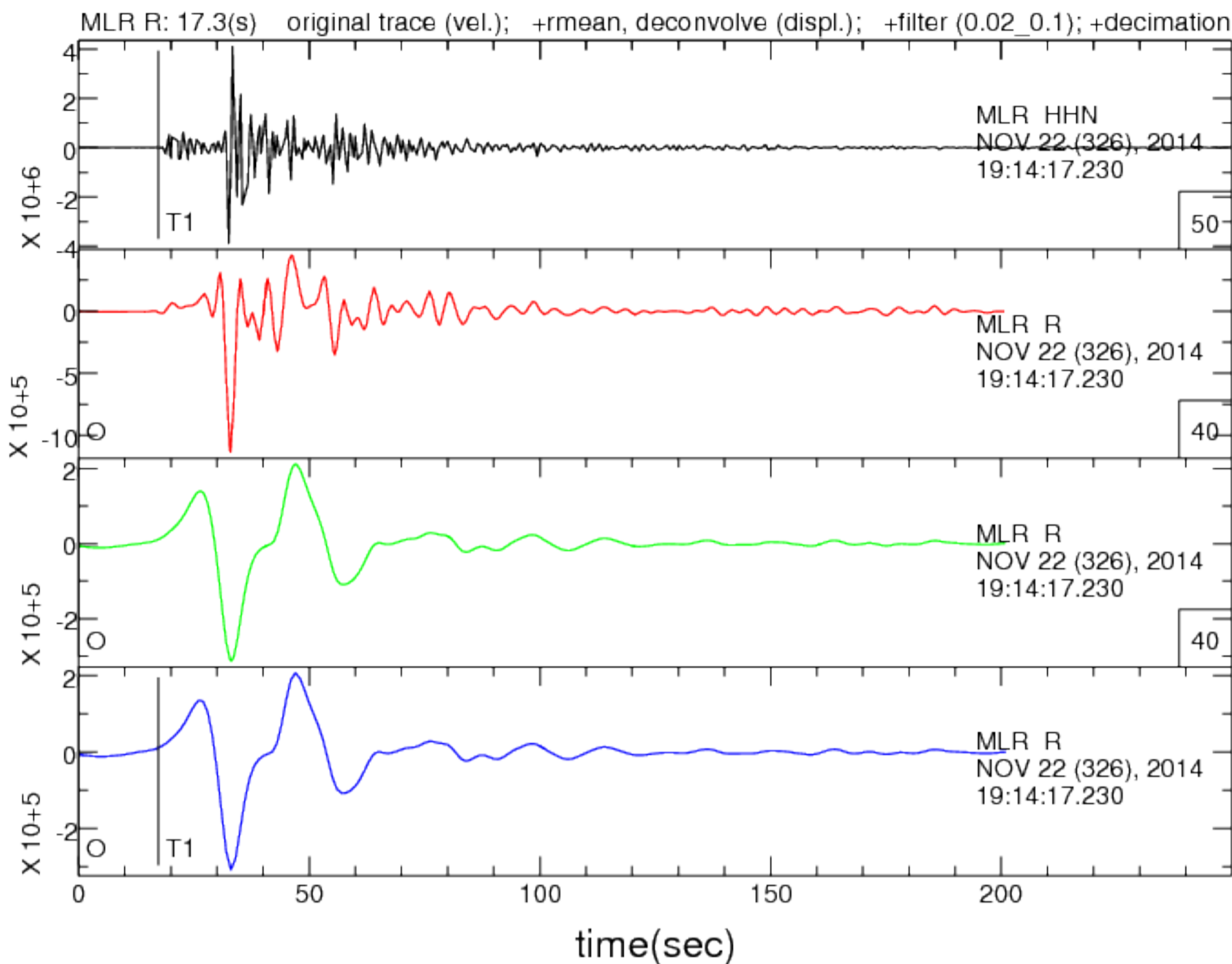




MLR 102.70(km) EvAz: 246.30 Tres: 0.8(sec) SNR: 15123.0 sensor: STS-2 ; P phase is at T1 sec

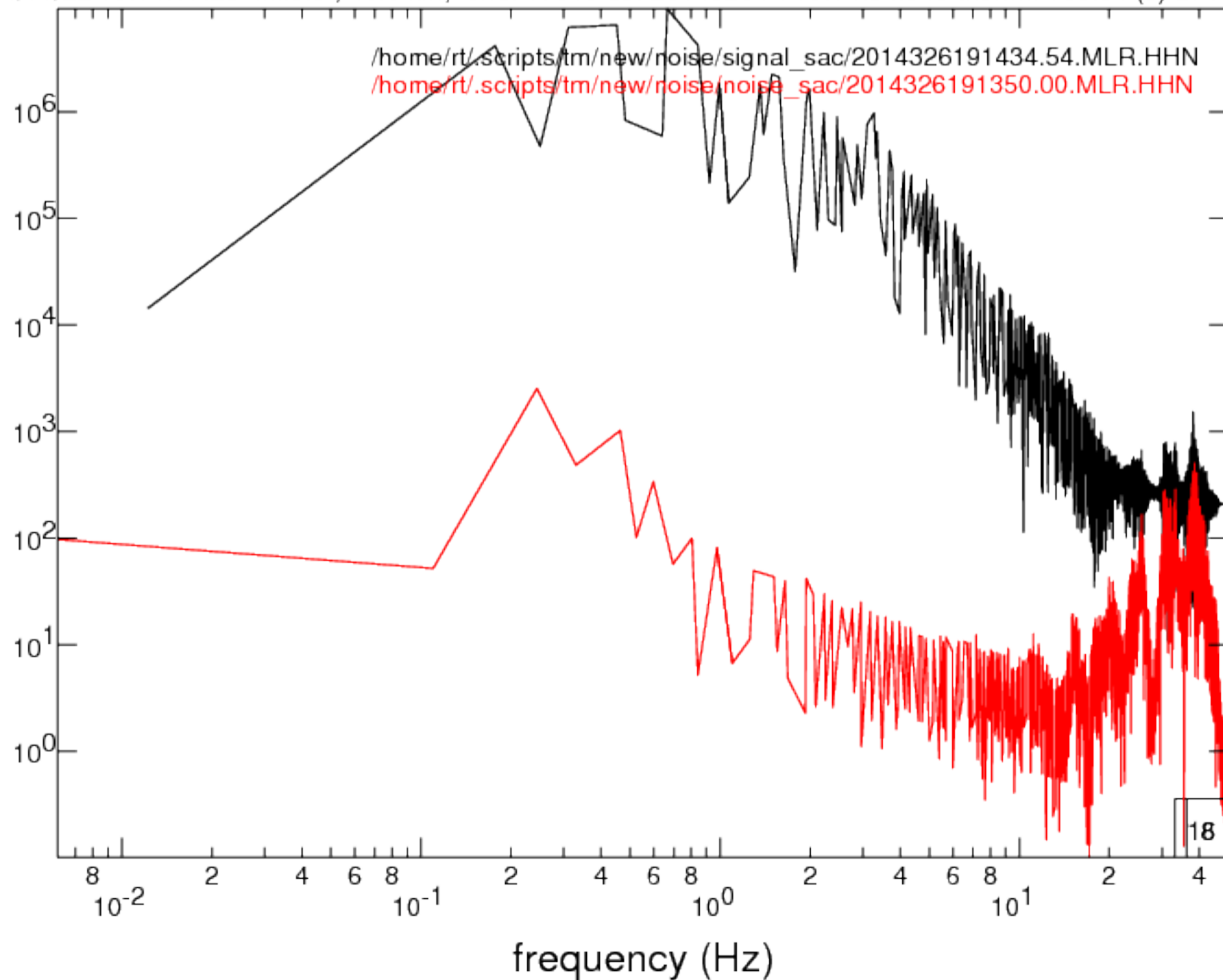
2014/11/22 19:14:17.23 ml:5.8 , 40.0 km, orid: 17010 db: 2014326 P: 19:14:34.548 tnswin: 163.84 (s) BP: 0.02\_0.1



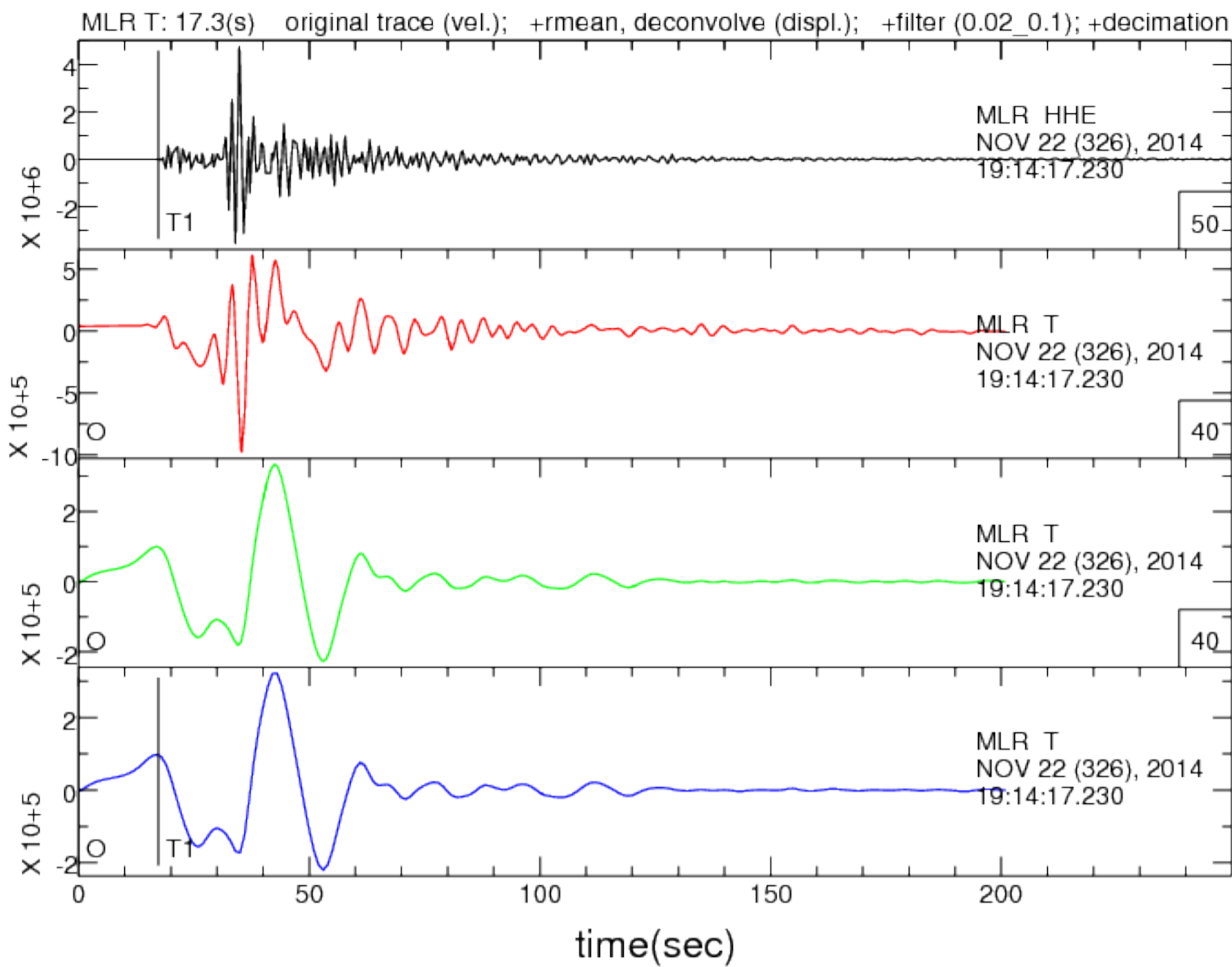


MLR 102.70(km) EvAz: 246.30 Tres: 0.8(sec) SNR: 15123.0 sensor: STS-2 ; P phase is at T1 sec

2014/11/22 19:14:17.23 ml:5.8 , 40.0 km, orid: 17010 db: 2014326 P: 19:14:34.548 tnswin: 163.84 (s) BP: 0.02\_0.1







MLR 102.70(km) EvAz: 246.30 Tres: 0.8(sec) SNR: 15123.0 sensor: STS-2 ; P phase is at T1 sec

2014/11/22 19:14:17.23 ml:5.8 , 40.0 km, orid: 17010 db: 2014326 P: 19:14:34.548 tnswin: 163.84 (s) BP: 0.02\_0.1

