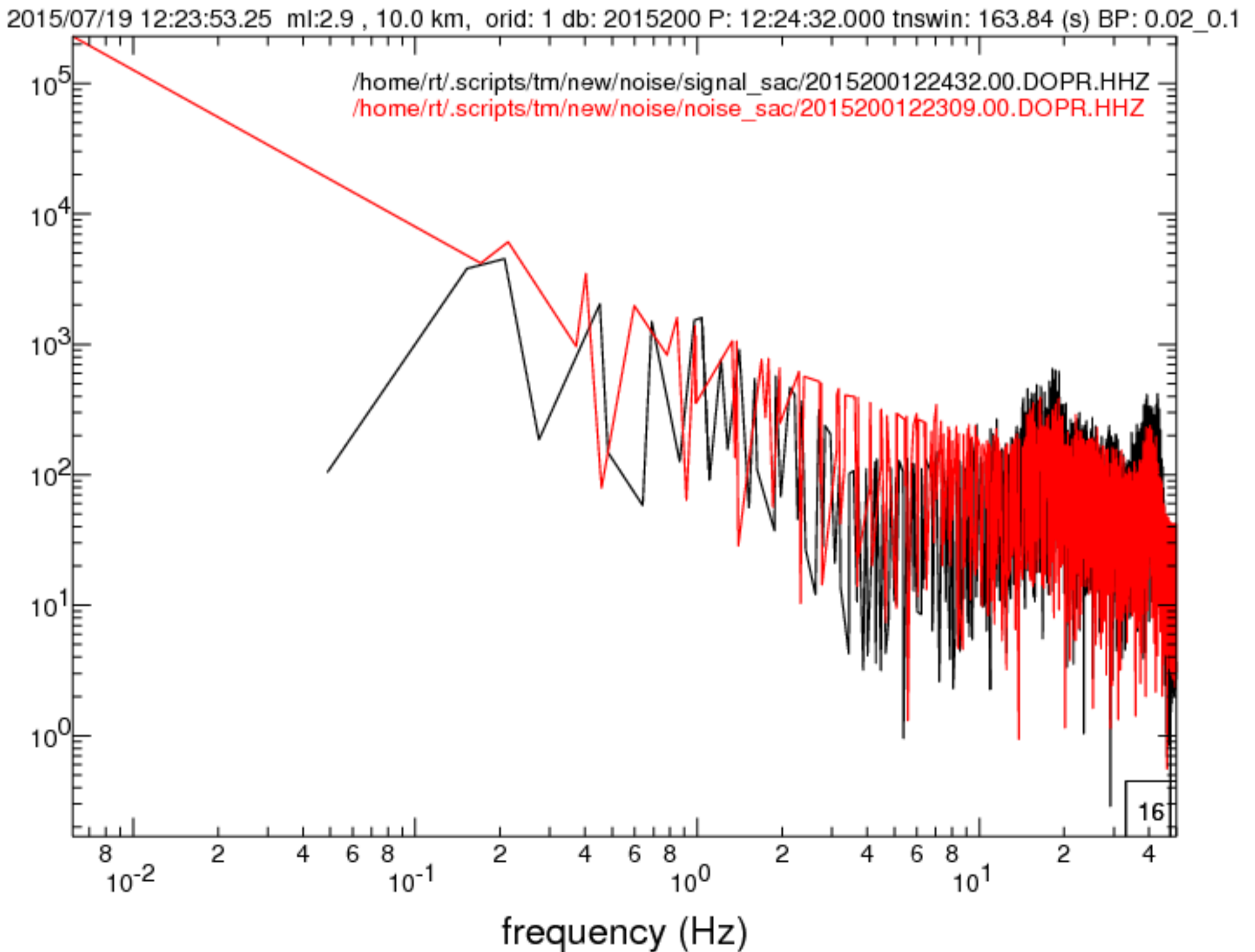
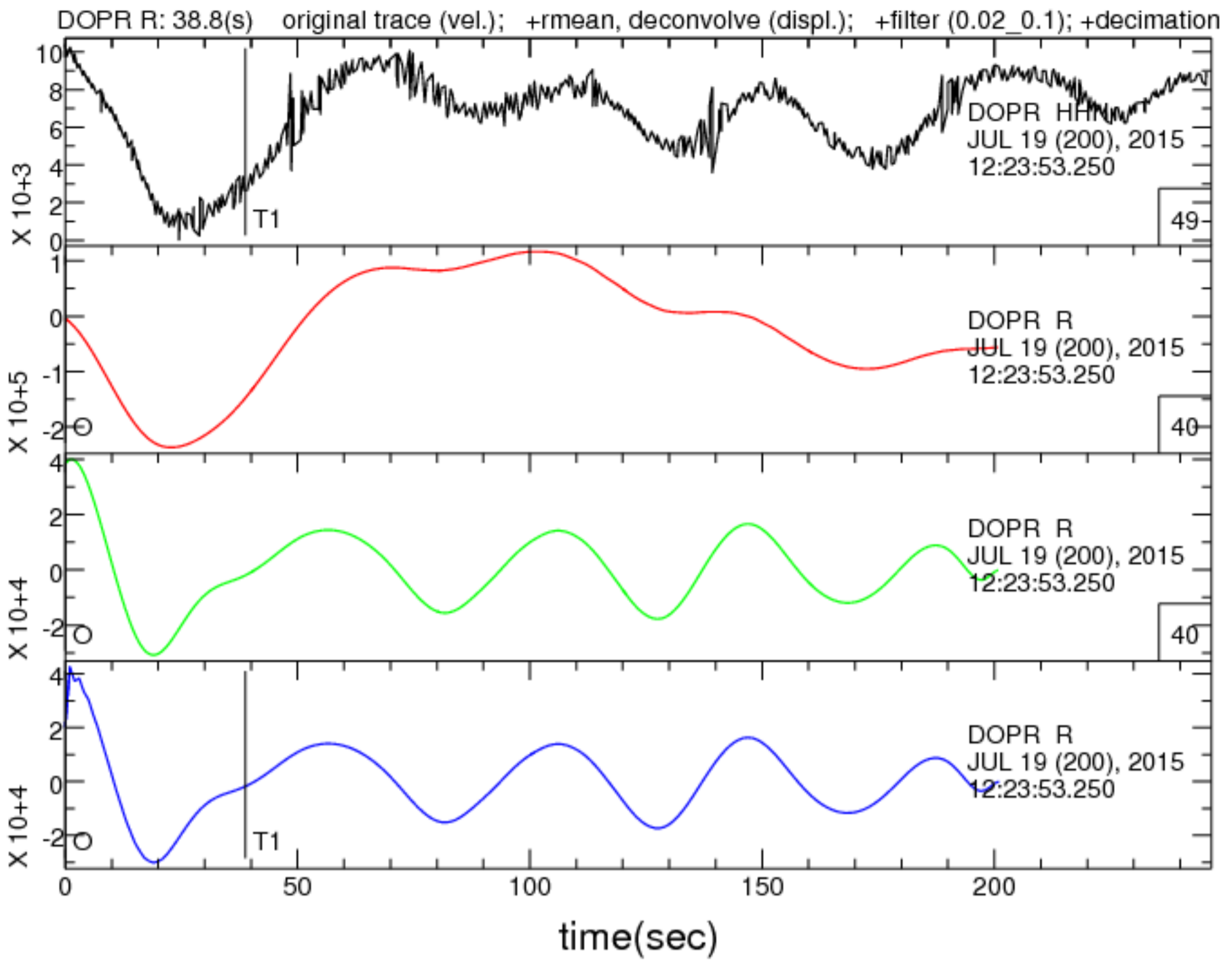
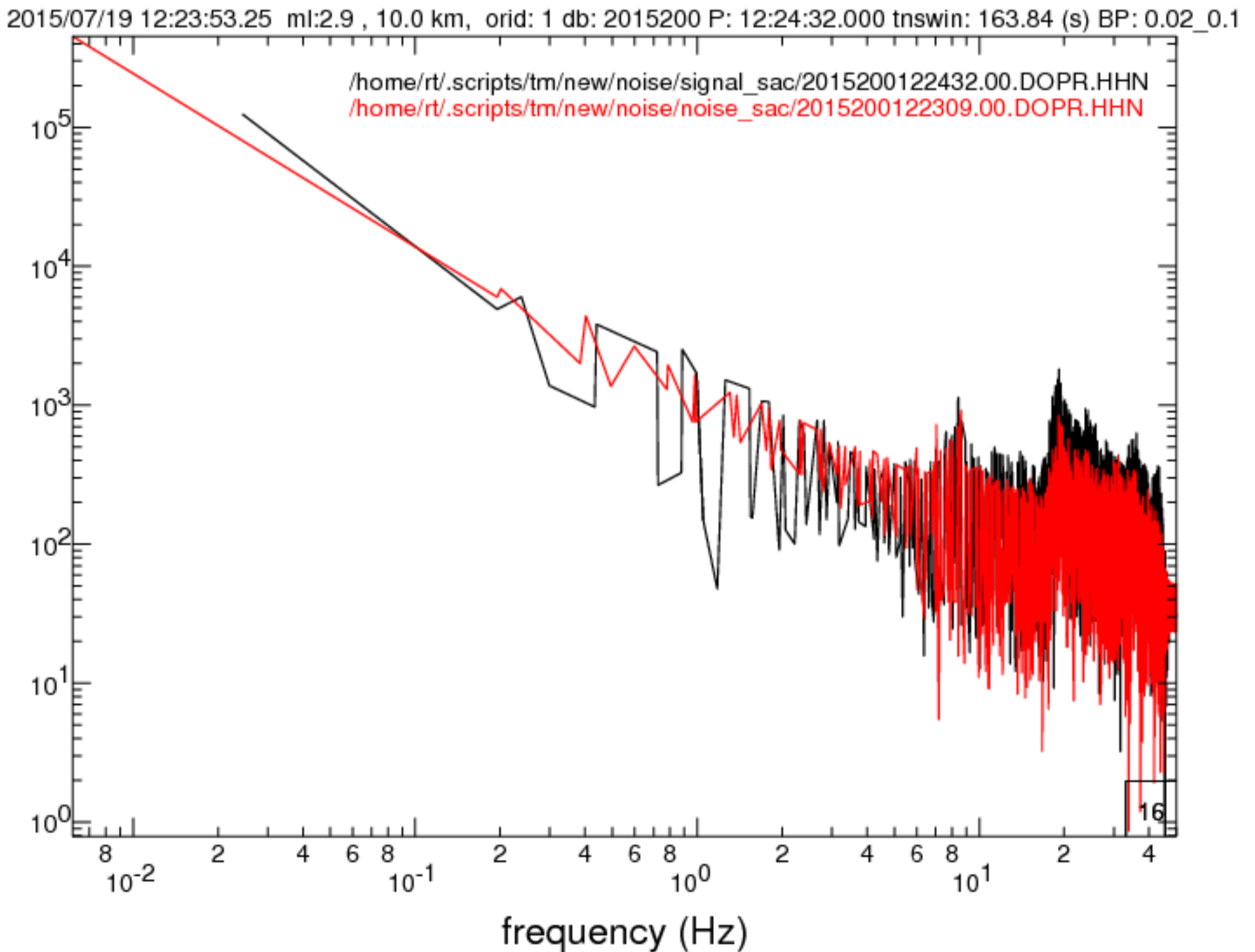


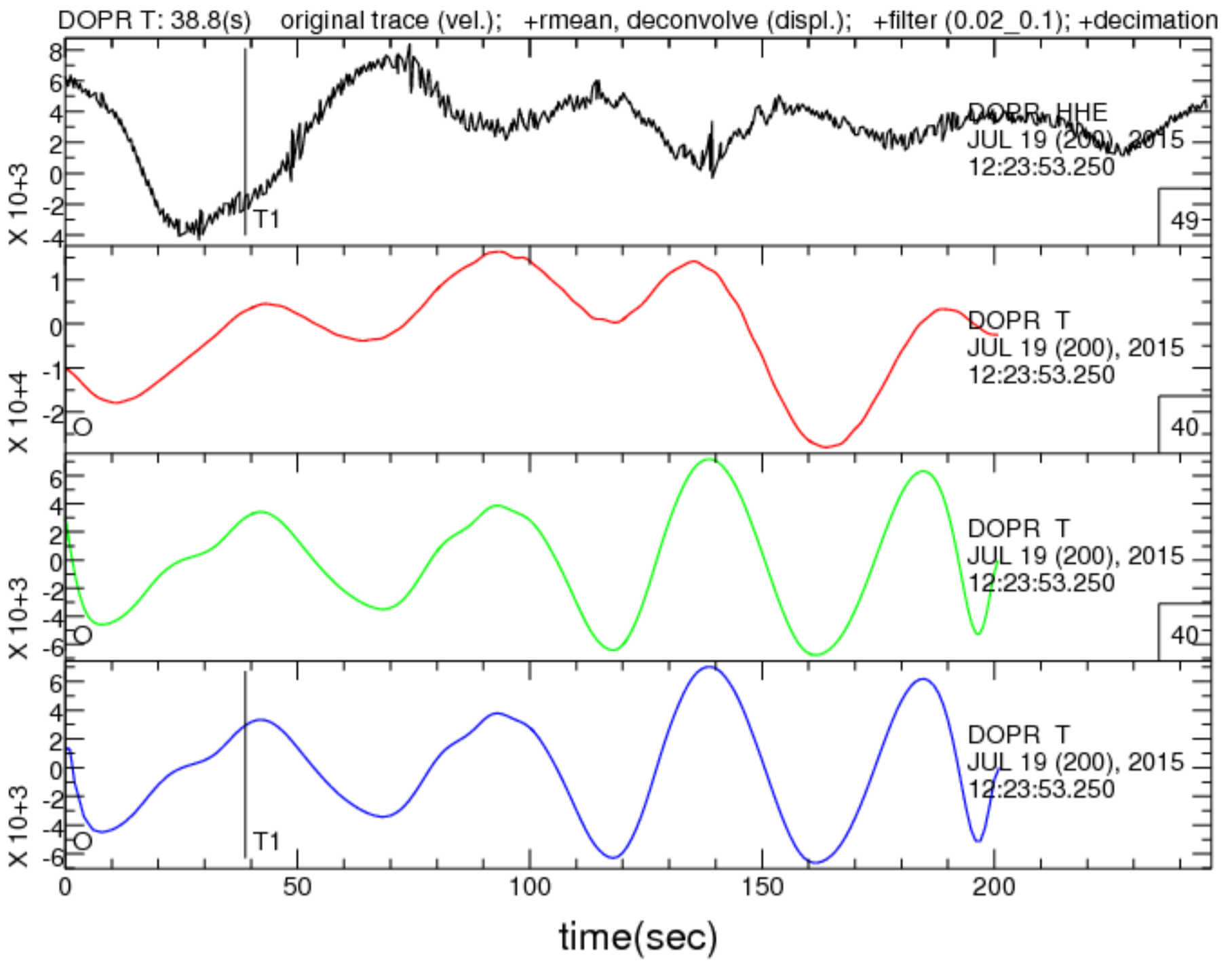
DOPR 258.32(km) EvAz: 140.40 Tres: 0.5(sec) SNR: 18.2 sensor: STS-2 ; P phase is at T1 sec





DOPR 258.32(km) EvAz: 140.40 Tres: 0.5(sec) SNR: 18.2 sensor: STS-2 ; P phase is at T1 sec





DOPR 258.32(km) EvAz: 140.40 Tres: 0.5(sec) SNR: 18.2 sensor: STS-2 ; P phase is at T1 sec

